



Panorama Slim

Tsunami Axis 



maars LIVING WALLS®



Living Walls

'We create extra-ordinary modular walls. We were the first to explore re-usable, relocatable and fully demountable solutions and have continued to innovate. We inspire with dynamic colours within an almost unlimited colour palette. We are changing the appearance of the modern office landscape and we continue to push the limits of what is possible. We lead the industry in the use of demountable and fully relocatable systems which conserve the environment. We can reuse not replace, we limit waste . Discover our products and our pioneering ethos.'

At Maars, our fascination with the influence the interior environment can have on the human experience continues to grow. We have over our 75 years grown in our understanding about the effect of the spaces we create and in which people spend a huge proportion of their time. Can a hospital room contribute to faster recuperation? Can modular walls generate improved learning performance at schools? Maars has continued to engage and research with the end users and designers to influence and form the next iteration of our products. We believe we have opportunities which modular walls offer that can enable you to feel happier in your environment and get the best out of yourself. This can be achieved by smartly integrating acoustics, air, light, sound, colour and images. The use of the latest technologies creates innovative concepts which create a living environment in which you become inspired, perform better and feel happier. For example, Maars has put together a colour pallet for care, the so-called Healing Colours, which have been proven to contribute to recovery times. The Maars Living Walls interact with you and create the environment you need. To do so, we must look at colour, shape, detailing and use of materials, however unusual. Maars living walls are fully demountable and relocatable which means an easier more cost effective reconfiguration in the future and extends our products life cycle, it's better for the environment and it's better for your budget.

Flexibility at its best

Maars Panorama slim allows you to deliver maximum transparency across your project. This wall system is characterised by the absence of visible joints and vertical profiles. Thanks to the ingenious construction of the system, a Panorama slim wall is a completely flat glass wall that is easy to assemble with minimal components.

Maars Panorama slim's high flexibility is simply the result of a clever click-and-fix system. Each Panorama slim wall can be reused and relocated if a different layout is desired with a minimum of waste. Moreover, this system makes Panorama slim fully compatible with other Maars partition walls giving a huge range of applications.

Elements for light, air, sound, multimedia and climate control can be integrated in a combination of closed wall elements, as well as cupboards, panels and furniture elements. Discover the many surprising possibilities under the 'Living Options' button on www.maarslivingwalls.com or in the 'Living Options' brochure.





Transparency promotes well-being and productivity

Transparency in the work environment is not only a way to promote an organisation's corporate culture, enhance the visual contact between employees and facilitate new, flexible ways of working. Transparency also creates optimum daylight conditions in the workplace. Research has shown that this has a positive impact on our overall sense of well-being and therefore on our productivity.

The Maars Panorama wall system is very "closed" in one respect: the soundproofing values are so high that acoustic comfort is guaranteed.

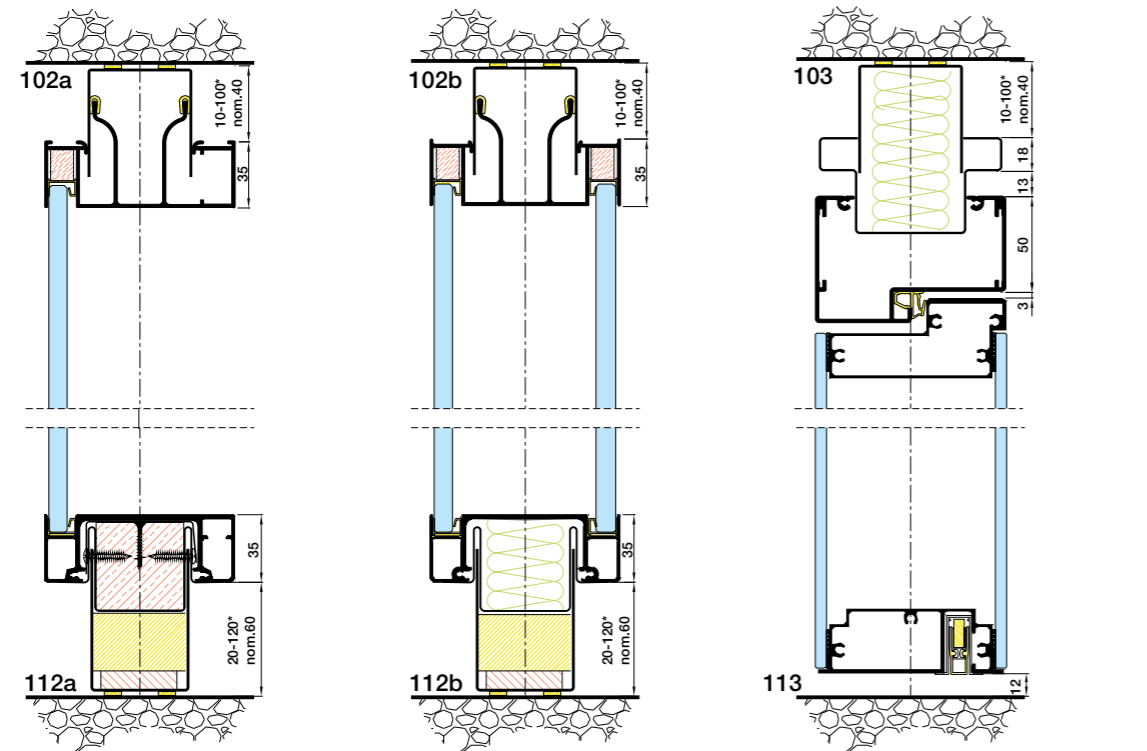
All-glass solutions for corners, joints and wall connections

The Panorama slim wall system offers two options for connecting glass panels. We can create joints with convex/concave glass without having to use other materials. We also can specify extremely thin and barely visible glass tape to join polished cut glass. No vertical profiles or silicone compounds are needed, which results in a sleek glass wall. You can choose from fully glazed or closed corners and wall joints. A minimalist 0mm joint is all you see between the glass panels and door frames. The recessed floor and ceiling profiles also add to the beautiful sleek design of each Panorama slim wall.

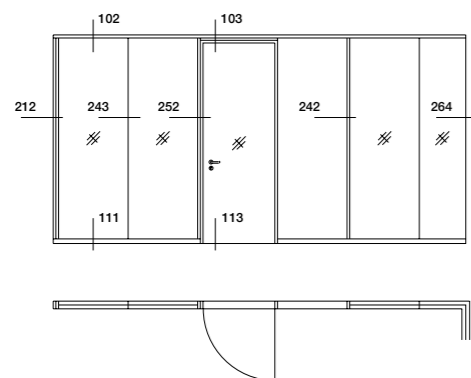
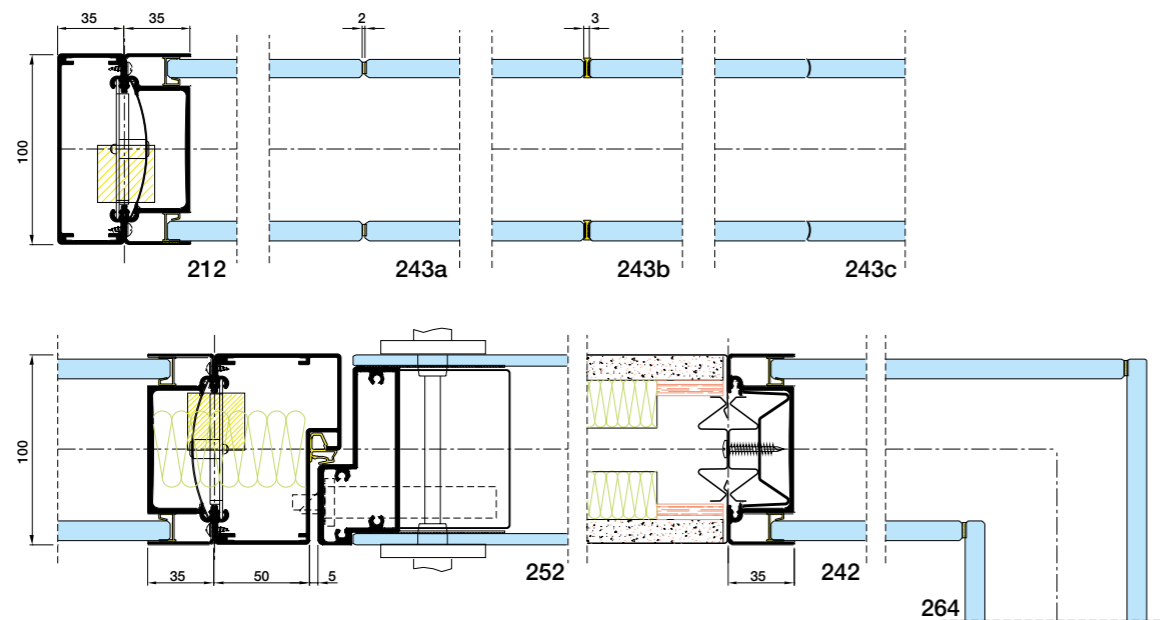
You can choose from a wide selection in the door range to complement the wall, from functional to high-spec architectural design. Optionally, the doors are available in the exact thickness of the wall for an even sleeker and flush result. Maars can also help you select the right combination of doors and accessories. See our doors brochure for the complete doors range.



Technical specifications



*Deviations of nominal sizes are optional. Standard tolerance +/- 13 mm on nominal size



DESCRIPTION

Demountable single or double glazed partition without vertical frames between glass panes. Compatible with String2 for solid partition and/or doorframes.

STRUCTURE

- GLAZED ELEMENTS:
 - Thickness: 100 mm
 - 10 and/or 12 mm thick tempered or laminated glass
 - Off-center single glazing or double glazing
- SOLID ELEMENTS: (in combinations with String²)
 - Thickness: 100 mm
 - Uprights/Studs: steel sections, 2 x 0,8 mm clinched clamping stud
 - Panels: Steel, galvanized, 0,8 mm on 12,5 mm plasterboard backing
 - 18 mm melamine finished particleboard panels
 - 18 mm veneer finished particleboard panels
 - Fabric covered steel or particleboard panels
 - Internal filling: mineral wool
 - Floor and ceiling U-channels: 1,5 mm galvanized steel sections
- DOOR ELEMENTS:
 - Doorframe: aluminium or steel frames provided with 3 hinges
 - Door leaves: Wide range of doors from 40 mm or 100 mm double glazed doors. Check our doors range for further options

JOINTS

0 mm joint or 5 mm joint for solid modules. Glass panels are connected by transparent silicon tape, polythylene terephthalate or polycarbonate sections. Glass panels also available with convex/concave worked edges.

FINISHES

- SURFACE TREATMENT: for all visible metal parts: environmental friendly epoxy powder coating approx. 80µ thickness.
- COLOURS: according to Maars colour chart. Other colours possible after consultation.
- GLAZING: a variety of options is available, such as sandblasting, film, painted glass. Other manifestations possible after consultation.

STANDARD DIMENSIONS

- Height: 3100 mm
- Width: solid panels 900/1200 mm, glass 900/1200 mm
- Other sizes in height or width after consultation.
- Weight: 55/70 kg/m²

INSTALLATION

- TOLERANCES:
 - Floor: +/- 13 mm
 - Ceiling: +/- 13 mm
 - Adjustable floor track for easy adjusting of tolerances
- CONNECTION:
 - All solid elements are connected by using clamping studs, enabling easy installation and easy disassembly.
- INTEGRATION OF ELECTRICAL AND DATA SERVICES
 - Perforated clamping studs provide access for wiring and other services. Demountable panelling provide easy access for installation afterwards.

CLEANING

Please check our website for our cleaning and maintenance instructions.

LIVING OPTIONS

Maars offers a wide range of options which can be integrated in our partitioning systems, depending on the type of wall. Ventilation studs, sound panels, cupboards, shelving systems, climate control panels, dynamic lighting, multimedia, panels clad with textile, privacy glass and our wide range of Maars Magnetics. See: www.maarsmagnetics.com. Check the Living Options brochure and www.maarslivingwalls.com for more information.

ACOUSTICS

Weighted sound reduction index to EN ISO 717-1

- Glazed panels: From $R_w(C; Ctr) = 28(-1; -1)$ dB to $R_w(C; Ctr) = 47(-2; -5)$ dB
- Door, solid: From $R_w(C; Ctr) = 31(-2; -2)$ dB to $R_w(C; Ctr) = 37(-1; -4)$ dB
- Door, glazed: $R_w(C; Ctr) = 39(0; -2)$ dB

FIRE

Not applicable.

Due to our policy of constant improvement our products are subject to change. Please check for the latest details: www.maarslivingwalls.com



Thinking of tomorrow

‘We are sustainable. We build from beautiful, natural products. We can be reused in the future. When we reuse we are custodians of the future.’

The welfare of people in any space is central to the Maars ethos. As such, Maars is constantly looking for sustainable and responsible solutions. New production techniques are sought out and studied. Reducing, reusing and recycling has become deeply rooted within the philosophy of the company. Maars understands that production always can and always must be done efficiently. For instance, we have made enormous progress with environmentally-friendly coatings, CO2-compensation and 5S ‘lean manufacturing’. Maars can also contribute to a higher BREEAM and LEED score. In order to be able to fully control our own quality, environmental and health & safety policies, Maars has set up an integrated operational management system within which all critical processes, in terms of quality, environment and safety, are assured.

This approach has won broad recognition and Maars is ISO-9001, ISO-14001 certified as is its UK dealer partner Tsunami-Axis. By scrutinising the entire production process, we are now able to produce more efficiently and continue to reduce energy consumption. A notable example is the fact that our process water is purified ‘in house’.

Maars’ continuous commitment towards innovation and our belief that today’s products are the raw materials for tomorrow has been awarded with a Cradle to Cradle Bronze certificate* for all our wall systems.



Tsunami Axis 

 **maars** LIVING WALLS®

Peter Stanway
p.stanway@tsunami-axis.com
T. 0207 636 8222
M. + 44 (0) 7967 835 961

Anna Reeve
a.reeve@tsunami-axis.com
T. 0207 636 8222

Tsunami Axis Ltd.
24-32 Stephenson Way,
London NW1 2HD

www.tsunami-axis.com
www.maarslivingwalls.com